

# one hundred shoreditch





One Hundred Shoreditch signifies the evolution of Shoreditch. Our bedrooms place emphasis on calm and comfort, while our restaurants and bars retain the fun and energy associated with East London. An independent spirit at the social heart of an evolving Shoreditch.





# An independent spirit at the social heart of an evolving Shoreditch

Located in a prominent position on Shoreditch High Street, One Hundred Shoreditch is home to 258 hotel bedrooms, six restaurants and bars including an all-day restaurant, wine bar and take-out hatch specialising in seafood, a cocktail bar in the basement and a rooftop bar and terrace with panoramic views across East London.

The bedrooms and suites at One Hundred Shoreditch are designed to be your retreat from the vibrancy and energy of area, providing headspace and calm in the heart of Shoreditch allowing you to disconnect from the outside world.

The hotel offers five meeting and event rooms suitable for everything from private dinners and receptions to meetings and weddings. The One Hundred Room, with its floor to ceiling glass, offers great views of the London city skyline.





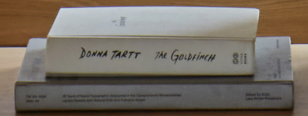
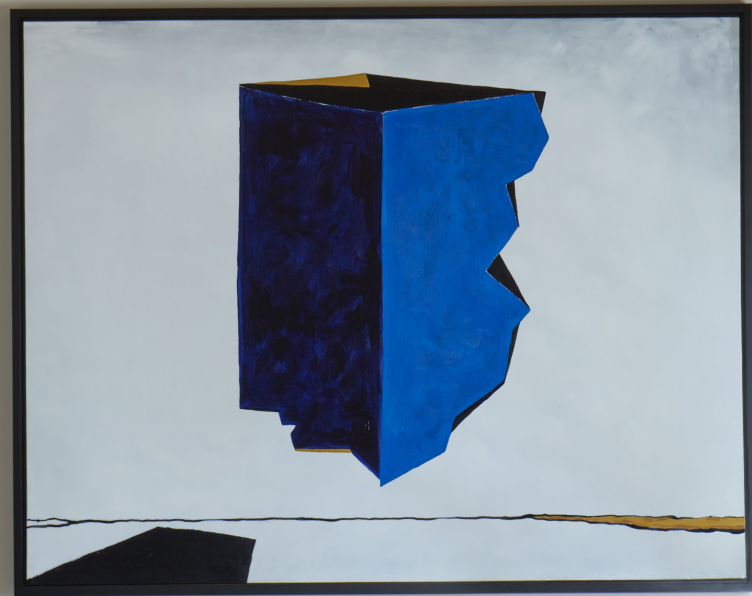
## Headspace and calm in the heart of Shoreditch

**The bedrooms and suites at One Hundred Shoreditch are a calm, comfortable retreat from the vibrancy of East London.**

All rooms are finished in neutral tones, feature bespoke art work and offer comfortable seating with hybrid dining and work areas. The bathrooms feature signature D.S. & Durga amenities. Many of the bedrooms have feature Oriel Windows or Juliette balconies.

The suites, with their spacious living rooms, are furnished with a mix of bespoke and curated vintage furnishings and have the added advantage of large outdoor terraces with views of East London and the city skyline.







# Simply British Seafood

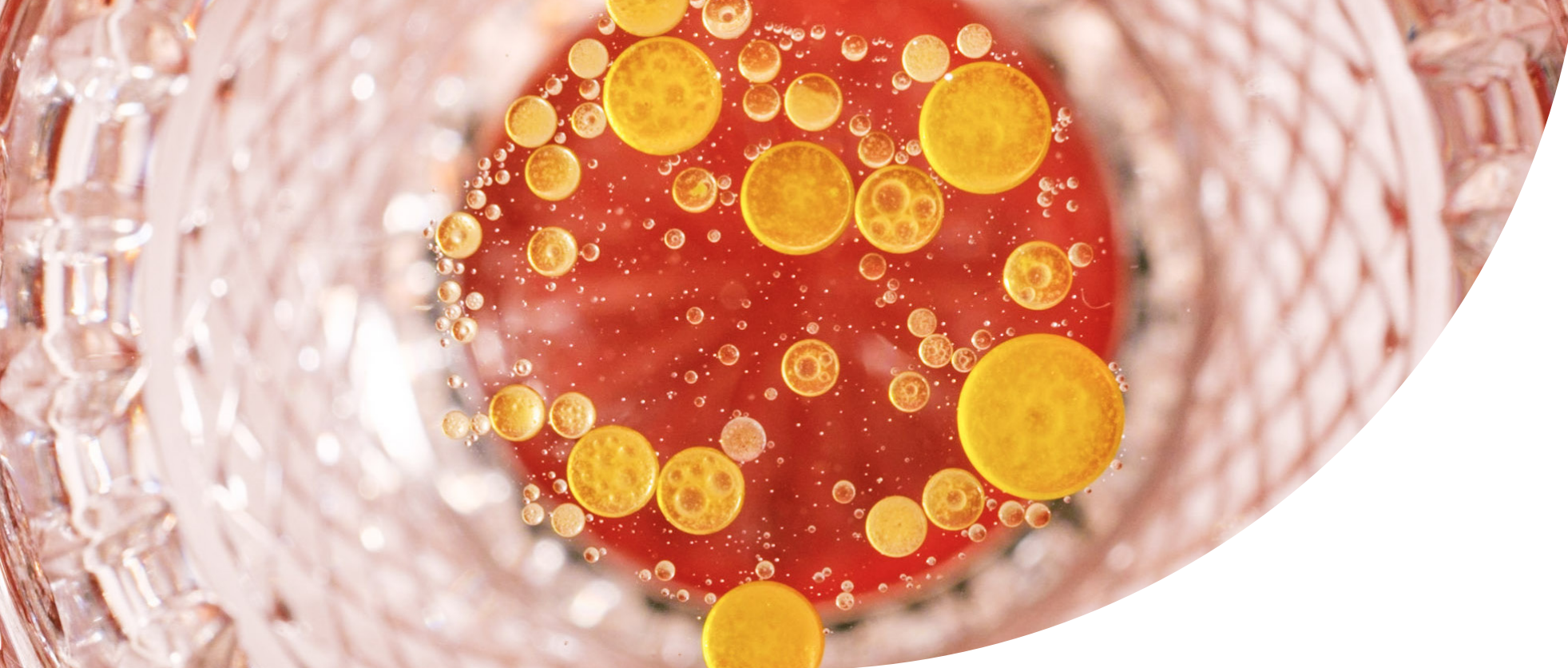
**Inspired by the fishing villages and popular seaside towns of England's East coast, the restaurant at One Hundred Shoreditch is a bright, all day space specialising in British seafood with a focus on ethical sourcing and using local suppliers.**

Whether dropping in for fish and chips throughout the day or catching up with friends at dinner, this will be Shoreditch's newest, casual spot for seafood.

The Wine Bar, overlooking the high street, is a easy space to wind down the day or raise a glass during special moments with friends. The wines represent a mix of modern, forward thinking producers sitting alongside more celebrated regions, complemented by a careful selection of light snacks.

The take-out Hatch is a playful addition to Shoreditch High Street, offering a fun way to order seafood and snacks to enjoy on the go.





## New takes on old favourites

Down in the basement, you'll find a cocktail bar created by one of our favourite bartenders. It's a laid back bar in the heart of Shoreditch where you wind down from a long day, or spend a fun filled evening with good drinks and good people.

The drinks harness a rich manifesto of heritage ingredients to create new takes on favourite serves with a cleaner, differently composed balance sitting alongside a handpicked selection of beers and wine.





# Shoreditch's Garden

**With pink marble tables, lush foliage and panoramic views of East London, The Rooftop feels like a private garden in the heart of Shoreditch.**

The drinks menu offers carefully chosen Champagnes and sparkling wines alongside light, bright cocktails and spritzes, ideal to sip as you relax, unwind and enjoy the

views, vibe and company. Food and snacks are gentle twists on the familiar, taking gentle inspiration from British Summertime picnics.

The Rooftop can be privately booked for events offering a unique East London venue for your next gathering or celebration.



the rooftop



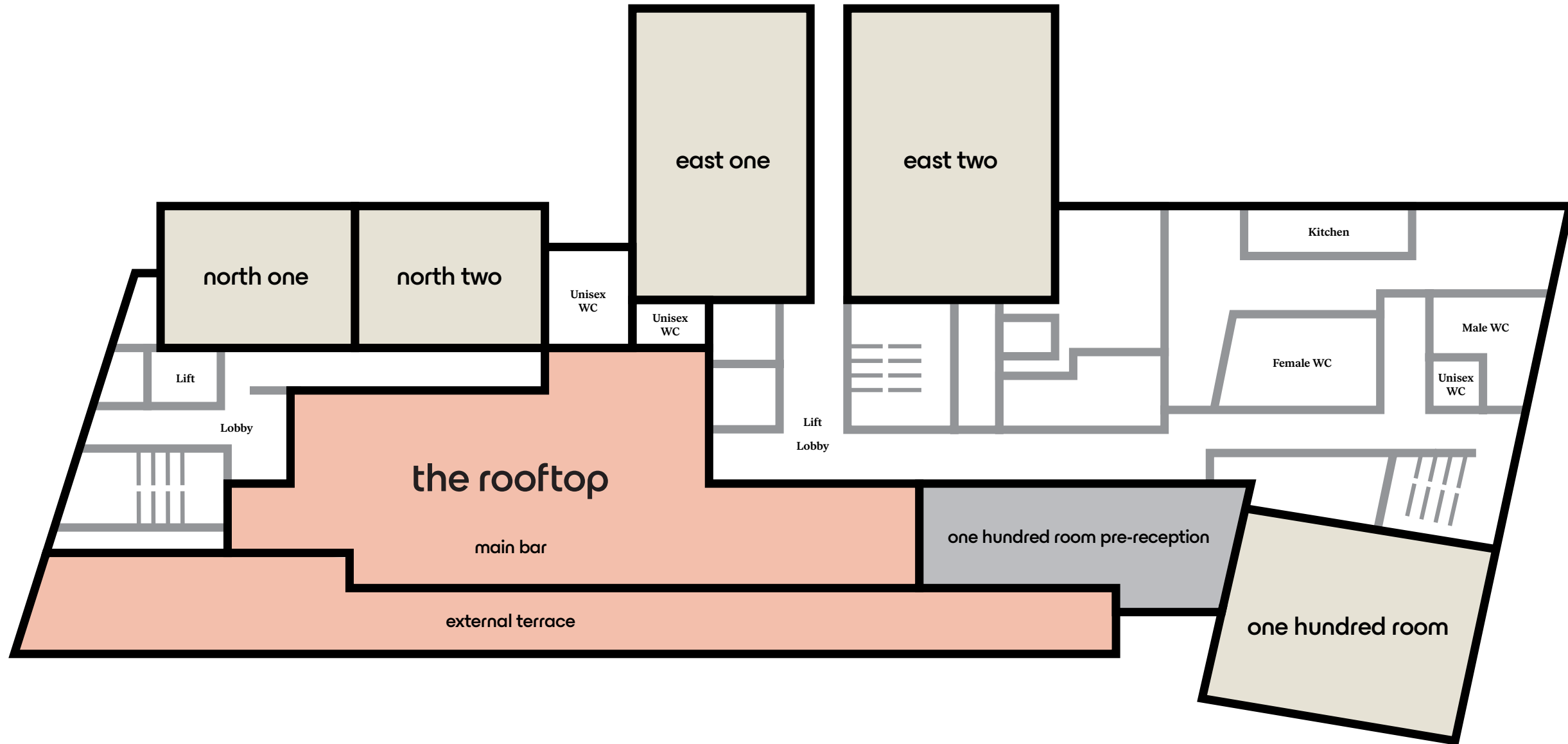


# Gatherings at one hundred shoreditch

From work meets and retreats to birthday bashes and tying the knot, One Hundred Shoreditch offers five meeting and event spaces.

Or if you'd rather, you can speak to us about private use of the rooftop bar, hosting a little party in one of our suites or even take over our restaurant or basement bar. There's something for every event, big or small.





# 7th floor floorplan and capacities

## north one

Width (m).....	7
Length (m).....	5
Height (m).....	2.4
Sqm .....	36
Sqft.....	391
Boardroom Capacity.....	14

## north two

Width (m).....	8
Length (m).....	5
Height (m).....	2.4
Sqm .....	39
Sqft.....	424
Meeting Capacity.....	14
Reception Capacity.....	20

## east one

Width (m).....	11
Length (m).....	6
Height (m).....	2.5
Sqm .....	67
Sqft.....	721
Boardroom Capacity.....	20
Reception Capacity.....	65
Theatre Capacity .....	50
Banquet (rounds).....	40

## east two

Width (m).....	11
Length (m).....	8
Height (m).....	2.5
Sqm .....	82
Sqft.....	886
Boardroom Capacity.....	26
Reception Capacity.....	85
Theatre Capacity .....	80
Banquet (rounds).....	60
Dinner.....	56

## one hundred room

Width (m).....	9
Length (m).....	7
Sqm .....	63
Sqft.....	680
Boardroom Capacity.....	24
Reception Capacity.....	80
Theatre Capacity .....	70
Banquet (rounds).....	50
Dinner.....	40



# one hundred shoreditch

One Hundred Shoreditch Hotel,  
 100 Shoreditch High Street, Shoreditch, London E1 6JQ  
[sales@onehundredshoreditch.com](mailto:sales@onehundredshoreditch.com)  
[onehundredshoreditch.com](http://onehundredshoreditch.com)

**Shoreditch High Street  
 Overground Station**  
 4 minute walk

**Old Street  
 Train and Tube Station**  
 9 minute walk

**London Liverpool Street  
 Train and Tube Station**  
 12 minute walk

**London City  
 Airport**  
 7.5 miles