

# one hundred shoreditch



an independent spirit





One Hundred Shoreditch signifies the evolution of Shoreditch. Our bedrooms place emphasis on calm and comfort, while our restaurants and bars retain the fun and energy associated with East London. An independent spirit at the social heart of an evolving Shoreditch.





# An independent spirit at the social heart of an evolving Shoreditch

Located in a prominent position on Shoreditch High Street, One Hundred Shoreditch is home to 258 hotel bedrooms, six restaurants and bars including an all-day restaurant, wine bar and take-out hatch specialising in seafood, a cocktail bar in the basement and a rooftop bar and terrace with panoramic views across East London.

The bedrooms and suites at One Hundred Shoreditch are designed to be your retreat from the vibrancy and energy of area, providing headspace and calm in the heart of Shoreditch allowing you to disconnect from the outside world.

The hotel offers five meeting and event rooms suitable for everything from private dinners and receptions to meetings and weddings. The One Hundred Room, with its floor to ceiling glass, offers great views of the London city skyline.





# Headspace and calm in the heart of Shoreditch

**The bedrooms and suites at One Hundred Shoreditch are a calm, comfortable retreat from the vibrancy of East London.**

All rooms are finished in neutral tones, feature bespoke art work and offer comfortable seating with hybrid dining and work areas. The bathrooms feature signature D.S. & Durga amenities. Many of the bedrooms have feature Oriel Windows or Juliette balconies.

The suites, with their spacious living rooms, are furnished with a mix of bespoke and curated vintage furnishings and have the added advantage of large outdoor terraces with views of East London and the city skyline.









# SEED LIBRARY

Down in the basement, you'll find a cocktail bar created by the award-winning Mr Lyan. It's a laid back bar in the heart of Shoreditch where you wind down from a long day, or spend a fun filled evening with good drinks and good people.

The drinks focus on a more 'lo-fi, analogue' approach to cocktail making with a stripped back approach inspired

by the origins of classic cocktails and the stories and knowledge held within alternative flavour sources. Alongside the short, frequently changing list of cocktails featuring new takes on classic mixed drinks, the bar also serves a beautifully created list of low-intervention wines alongside a diverse range of beers from craft brewers.



# the rooftop

The Rooftop is a place to have fun with a glamorous vibe. It takes inspiration from Palm Springs and feels like a playful, Californian escape in the heart of Shoreditch thanks to its pink colour scheme, lush succulents, cacti and panoramic views.

With a backdrop of Latin dance music, the bar team specialise in

Margaritas and classic Martinis or choose from the rosé and Champagne list. The food menu offers modern California mixed with retro Americano.

The Rooftop can be privately booked for events offering a unique East London venue for your next gathering or celebration.





## lobby bar

The hotel's living room, the Lobby Bar is a relaxed place to pull up a chair, get comfy with a beer, wine or cocktail alongside Neapolitan pizzas straight from the oven.



## coffee shop

Serving ethically sourced coffee from East End-based Ozone Coffee roaster, the Coffee shop offers traditionally baked goods and a wide range of gluten free and plant-based options, proper sandwiches and range of our house made smoothies and juices for breakfast, snacks and lunch.



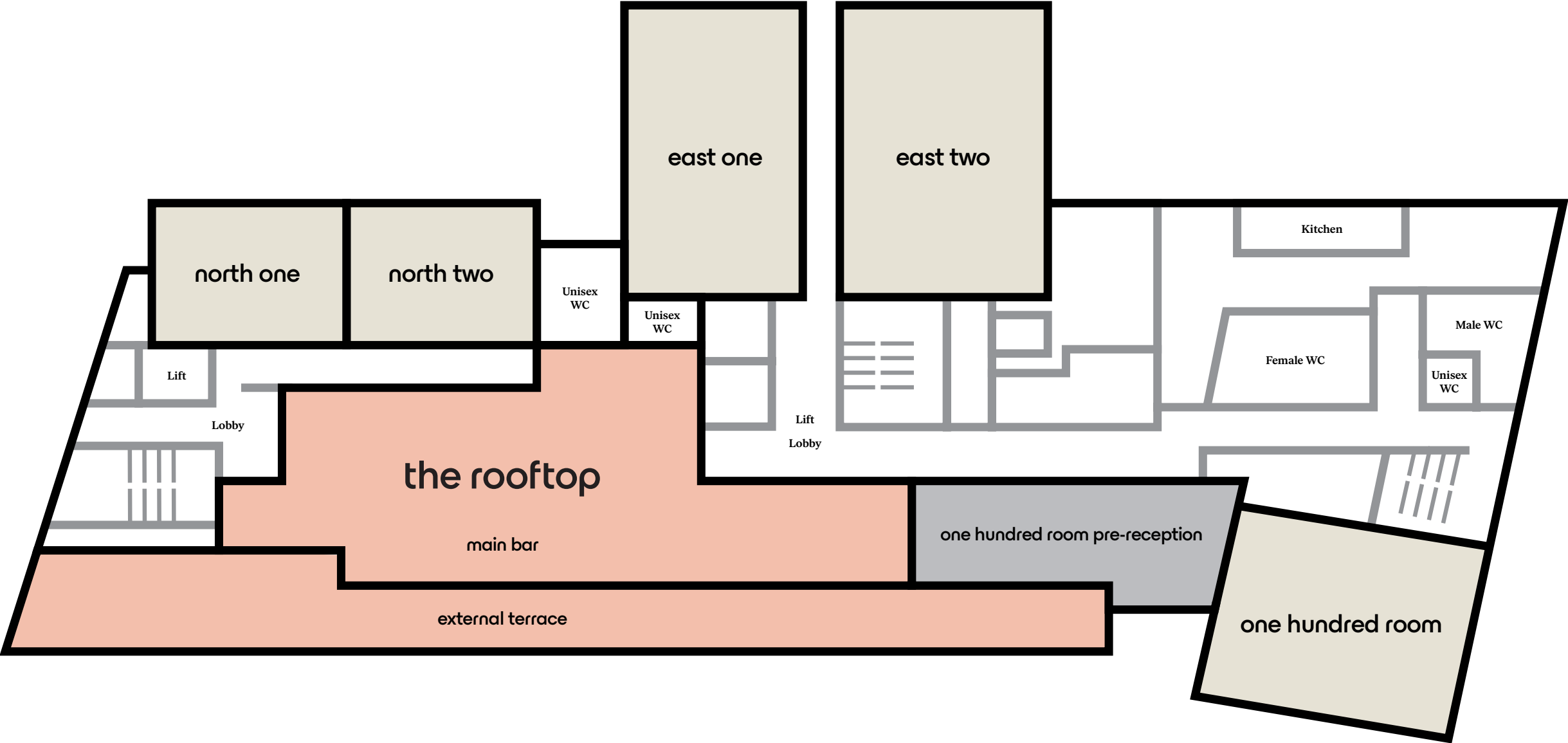


# Gatherings at one hundred shoreditch

From work meets and retreats to birthday bashes and tying the knot, One Hundred Shoreditch offers five meeting and event spaces.

Or if you'd rather, you can speak to us about private use of the rooftop bar, hosting a little party in one of our suites or even take over our restaurant or basement bar. There's something for every event, big or small.





# 7th floor floorplan and capacities

north one	
Width (m).....	7
Length (m) .....	5
Height (m) .....	2.4
Sqm .....	36
Sqft .....	391
Boardroom Capacity.....	14

north two	
Width (m).....	8
Length (m) .....	5
Height (m) .....	2.4
Sqm .....	39
Sqft .....	424
Meeting Capacity.....	14
Reception Capacity .....	20

east one	
Width (m).....	11
Length (m) .....	6
Height (m) .....	2.5
Sqm .....	67
Sqft .....	721
Boardroom Capacity.....	20
Reception Capacity .....	65
Theatre Capacity .....	50
Banquet (rounds).....	40

east two	
Width (m).....	11
Length (m) .....	8
Height (m) .....	2.5
Sqm .....	82
Sqft .....	886
Boardroom Capacity.....	26
Reception Capacity .....	85
Theatre Capacity .....	80
Banquet (rounds).....	60
Dinner .....	56

one hundred room	
Width (m).....	9
Length (m) .....	7
Sqm .....	63
Sqft .....	680
Boardroom Capacity.....	24
Reception Capacity .....	80
Theatre Capacity .....	70
Banquet (rounds).....	50
Dinner .....	40



# one hundred shoreditch

One Hundred Shoreditch Hotel,  
100 Shoreditch High Street, Shoreditch, London E1 6JQ  
[sales@onehundredshoreditch.com](mailto:sales@onehundredshoreditch.com)  
📷 @onehundredshoreditch  
[onehundredshoreditch.com](http://onehundredshoreditch.com)

**Shoreditch High Street  
Overground Station**  
4 minute walk

**Old Street  
Train and Tube Station**  
9 minute walk

**London Liverpool Street  
Train and Tube Station**  
12 minute walk

**London City  
Airport**  
7.5 miles